



Business in Nebraska

Volume 53, No. 629

presented by Bureau of Business Research (BBR)

April 1998

An Evaluation of Performance and Structural Change in Employment—U. S., Nebraska, and Omaha Area Economies, 1988 to 1995

Keith K. Turner, Ph.D. and Edward D. Coleman, M.S., University of Nebraska at Omaha

Introduction

A periodic comparative evaluation of employment and its composition is worthwhile since employment is one of the most basic determinants of the health of the economy and quality of life. Changes in employment over time reflect restructuring of an economy and, ultimately, have social impacts. Moreover, the underlying trends of employment give an indication of an economy's future growth and well being. A future article will evaluate personal income as a measure of economic performance.

This article examines employment data developed by the U. S. Department of Commerce, Bureau of Economic Analysis (BEA) and compiled by the Bureau of Business Research (BBR). To provide a consistent and comparable analysis, the initial and terminal years of the study, 1988 and 1995, both represent periods of healthy economic growth. The data tables summarize the economies of the U. S. (Table 1), Nebraska (Table 2) and the Omaha Area (Tables 3 and 4). The Omaha area includes the Nebraska counties of Douglas, Sarpy, and Washington in Table 3. Pottawattamie County, Iowa is added to the Omaha area in Table 4. Pottawattamie County is also presented separately in Table 5 to show its growth relative to the rest of the Omaha Area.

Average annual employment (number of full- and part-time persons employed) by primary sectors and major industries for each economy, annual data for the first and last years of the study period, and the proportionate share of the annual totals for each line item are shown in Table 1. In addition, absolute change in employment from 1988 to 1995 and the absolute growth percentage over the period, as well as the change in share of each line item over the same period, are shown. This approach demonstrates the changing structure, trend of compositional changes, and relative significance of each category over time.

Employment

Table I
United States—Average Annual Employment, 1988-1995
(thousands)

| Industry Sector | 1988 | % of Total | 1995 | % of Total | Absolute Change | % Change Employment | % Change Share |
|--|------------------|---------------|------------------|---------------|-----------------|---------------------|----------------|
| Private Sector | | | | | | | |
| Agricultural Services/Forestry/Fisheries | 1,356.2 | 1.01 | 1,821.9 | 1.22 | 465.7 | 34.34 | 21.12 |
| Mining | 1,089.3 | 0.81 | 922.0 | 0.62 | (167.3) | (15.36) | (23.69) |
| Construction | 7,172.4 | 5.33 | 7,649.6 | 5.12 | 477.2 | 6.65 | (3.84) |
| Manufacturing | 19,886.0 | 14.77 | 19,225.9 | 12.88 | (660.1) | (3.32) | (12.83) |
| Transportation/Communication/Utilities | 6,225.7 | 4.63 | 7,079.7 | 4.74 | 854.0 | 13.72 | 2.53 |
| Wholesale Trade | 6,480.8 | 4.81 | 6,953.5 | 4.66 | 472.7 | 7.29 | (3.27) |
| Retail Trade | 22,124.5 | 16.44 | 25,181.3 | 16.87 | 3,056.8 | 13.82 | 2.61 |
| Finance/Insurance/Real Estate | 11,056.7 | 8.21 | 11,088.6 | 7.43 | 31.9 | 0.29 | (9.58) |
| Services | 35,538.6 | 26.40 | 44,773.6 | 29.99 | 9,235.0 | 25.99 | 13.59 |
| Total Private Sector | 110,930.2 | 82.42 | 124,696.1 | 83.53 | 13,765.9 | 12.41 | 1.35 |
| Public Sector | | | | | | | |
| Federal, Civilian | 3,140.0 | 2.33 | 2,976.0 | 1.99 | (164.0) | (5.22) | (14.55) |
| Military | 2,814.0 | 2.09 | 2,234.0 | 1.50 | (580.0) | (20.61) | (28.42) |
| State and Local | 14,436.0 | 10.73 | 16,400.0 | 10.99 | 1,964.0 | 13.60 | 2.42 |
| Total Public Sector | 20,390.0 | 15.15 | 21,610.0 | 14.48 | 1,220.0 | 5.98 | (4.45) |
| Total Nonfarm Sector | 131,320.2 | 97.57 | 146,306.1 | 98.00 | 14,985.9 | 11.41 | 0.45 |
| Farm | 3,277.0 | 2.43 | 2,984.0 | 2.00 | (293.0) | (8.94) | (17.90) |
| Total Employment | 134,597.2 | 100.00 | 149,290.1 | 100.00 | 14,692.9 | 10.92 | 0.00 |

Source: Bureau of Economic Analysis, U.S. Department of Commerce

Employment Changes

U. S.

Total employment in the United States has grown from 135 million workers in 1988 to 149 million workers in 1995, a 10.9 percent increase. The total nonfarm sector has grown from 131 million to 146 million, an 11.4 percent increase. Farm sector employment declined 8.9 percent from 3.3 million workers to 3.0 million. The nonfarm sector gained nearly a half a percentage point in share of total employment, growing from 97.6 percent in 1988 to 98.0 percent in 1995.

Private sector industries accounted for the majority of the nonfarm sector's growth. Private employment grew from 111 million in 1988 to 125 million in 1995, a 12.4 percent growth. The greatest impact of the private sector came from the growth in services. Service industry employment grew 26 percent, from approximately 36 million workers to 45 million workers. To give a better perspective of the growth in services, 26.4 percent of the work force was employed in this sector in 1988, but by 1995 the share had increased to 30.0 percent. Other industries in the private sector that had significant change included retail trade and transportation, communications, and utilities (TCU). Retail trade employment grew from 22 million in 1988 to 25 million in 1995, a 13.8 percent increase. TCU employment grew 13.7 percent, from

6 million to 7 million workers, a share gain of only 0.1 percentage point.

Manufacturing exhibited substantial employment declines in both absolute and relative terms over the study period. Manufacturing employment fell from 19.9 million in 1988 to 19.2 million in 1995, a 3.3 percent reduction. Moreover, the share of manufacturing employment declined from 14.8 percent to 12.9 percent. The retail trade share expanded from 16.4 percent to 16.9 percent. Construction employment grew from 7.2 million to 7.6 million, a 6.7 percent growth. The construction share of employment, however, decreased from 5.3 percent to 5.1 percent.

The public sector displayed 6 percent employment growth, as the average number of workers grew from 20.4 million to 21.6 million. However, the public sector's share of employment declined slightly, from 15.2 percent in 1988 to 14.5 percent in 1995.

The industry that showed the greatest overall growth rate was the agricultural services, forestry, and fisheries sector, with a 34.3 percent expansion of employment. While the agricultural services, forestry, and fisheries sector showed the largest percentage growth, it is the next to smallest sector in the economy, in absolute terms, with a 1.2 percent total share.

Table 2
Nebraska—Average Annual Employment, 1988-1995
(thousands)

| Industry Sector | 1988 | % of Total | 1995 | % of Total | Absolute Change | % Change Employment | % Change Share |
|--|---------------|---------------|-----------------|---------------|--------------------|------------------------|-------------------|
| Private Sector | | | | | | | |
| Agricultural Services/Forestry/Fisheries | 10.42 | 1.09 | 13.34 | 1.23 | 2.92 | 28.05 | 12.73 |
| Mining | 2.89 | 0.30 | 2.50 | 0.23 | (0.39) | (13.40) | (23.75) |
| Construction | 38.59 | 4.05 | 51.97 | 4.80 | 13.39 | 34.69 | 18.58 |
| Manufacturing | 98.49 | 10.34 | 115.22 | 10.65 | 16.72 | 16.98 | 2.99 |
| Transportation/Communication/Utilities | 51.71 | 5.43 | 57.43 | 5.31 | 5.72 | 11.07 | (2.22) |
| Wholesale Trade | 52.85 | 5.55 | 56.62 | 5.23 | 3.77 | 7.13 | (5.68) |
| Retail Trade | 154.90 | 16.26 | 185.06 | 17.10 | 30.16 | 19.47 | 5.18 |
| Finance/Insurance/Real Estate | 75.17 | 7.89 | 80.63 | 7.45 | 5.45 | 7.26 | (5.57) |
| Services | 232.06 | 24.35 | 290.84 | 26.87 | 58.78 | 25.33 | 10.34 |
| Total Private Sector | 717.08 | 75.26 | 853.61 | 78.87 | 136.53 | 19.04 | 4.80 |
| Public Sector | | | | | | | |
| Federal, Civilian | 17.62 | 1.85 | 16.20 | 1.50 | (1.41) | (8.03) | (19.03) |
| Military | 23.48 | 2.46 | 16.62 | 1.54 | (6.86) | (29.21) | (37.67) |
| State and Local | 117.89 | 12.37 | 128.95 | 11.91 | 11.06 | 9.38 | (3.70) |
| Total Public Sector | 158.99 | 16.68 | 161.77 | 14.95 | 2.79 | 1.75 | (10.42) |
| Total Nonfarm Sector | 876.07 | 91.94 | 1,015.38 | 93.81 | 139.32 | 15.90 | 2.04 |
| Farm | 76.80 | 8.06 | 66.95 | 6.19 | (9.85) | (12.83) | (23.26) |
| Total Employment | 952.87 | 100.00 | 1,082.33 | 100.00 | 129.46 | 13.59 | 0.00 |

Source: Bureau of Economic Analysis, U.S. Department of Commerce

Nebraska

Total employment in Nebraska grew 13.6 percent from 953,000 workers in 1988 to just over 1 million workers in 1995 (Table 2). The nonfarm sector showed a total employment share gain to 93.8 percent in 1995, up from 91.9 percent in 1988. As a direct result, the farm sector's employment share declined from 8.1 percent to 6.2 percent.

The private sector accounted for the majority of the state's employment and growth. The sector grew from 717,000 workers to 854,000 workers over the study period, a 19 percent change. Moreover, the private sector's share of employment increased from 75.3 percent to 78.9 percent. All industries within the private sector exhibited growth except mining, which is relatively insignificant with less than 3,000 employed in that sector. Services displayed the greatest absolute employment growth, advancing from 232,000 workers to 291,000. This 25.3 percent growth resulted in an expansion of services' share from 24.3 percent in 1988 to 26.9 percent in 1995.

Retail trade, transportation, communication, and utilities (TCU), and manufacturing showed healthy advances in terms of workers employed. The retail trade work force increased from 155,000 to 185,000 workers—19.5 percent. TCU had an 11 percent increase in employment from 52,000 workers in 1988 to 57,000 in 1995. However, TCU's share of total state employment declined slightly over the period, from 5.4 percent

to 5.3 percent. Manufacturing had a 17 percent increase in employment, from 98,000 to 115,000 workers.

Construction and agricultural services, forestry, and fisheries had very healthy increases in employment during the period. Construction employment increased from almost 39,000 workers in 1988 to 52,000 in 1995. This is a 34.7 percent increase in employment with the share of total employment increasing from 4 percent to 4.8 percent. Agricultural services, forestry, and fisheries had a 28.1 percent increase in employment from 10,000 to 13,000 workers.

Wholesale trade and finance, insurance, and real estate (FIRE) both had modest gains in employment but both declined in their share of total state employment. Wholesale trade employment increased 7.1 percent, from 53,000 to 57,000 workers. FIRE grew from 75,000 to 81,000 workers, a 7.3 percent increase in employment.

The public sector showed a modest increase of 1.8 percent, as employment grew from 159,000 to 162,000. The sector's employment share decreased to 15.0 percent in 1995 from 16.7 in 1988.

The farm sector decreased substantially. Farm employment declined from 77,000 to 67,000, a 12.8 percent reduction. As in the national data, the greatest percentage change took place in the agricultural services, forestry, and fisheries component of the private sector.

Omaha Area (Douglas, Sarpy, and Washington Counties, Excluding Pottawattamie County, Iowa)

Table 3 summarizes changes in employment for the Omaha area. Total employment grew 16.5 percent, from 357,400 in 1988 to 416,500 in 1995. The nonfarm sector accounted for 99.6 percent of the Omaha area employment in 1995, up from 99.4 percent in 1988. Nonfarm employment grew in absolute terms from 355,000 workers to 415,000 or 16.7 percent. Farm employment decreased from 2,200 workers to 1,800, a share loss from 0.6 percent in 1988 to 0.4 percent in 1995.

Similar to the state and nation, Omaha's private sector experienced tremendous growth over the study period. The sector's absolute employment grew 21.1 percent, from 296,600 to 359,200 workers. Services exhibited the largest employment growth. Service workers increased from 103,800 to 137,500, a share gain from 29 percent to 33 percent. Retail trade and FIRE exhibited notable absolute growth, but FIRE declined slightly in share terms. Retail trade grew from 55,700 workers to 69,100, and FIRE employment increased from 38,800 to 42,200. These figures correspond to 24.1 percent and 8.7 percent growth rates, respectively.

The changes in manufacturing and construction were noteworthy. In 1988 the Omaha manufacturing sector employed 32,200 workers or 9 percent of total employment. By 1995 the number of persons employed in manufacturing increased by almost 1,800. However, the sector's share fell to 8.2 percent. Construction grew in both absolute and relative terms. Construction employment grew from 15,900 workers, a 4.4 percent share, to 20,900, a 5 percent share.

Public sector employment decreased from 58,600 workers in 1988 to 55,500 workers in 1995. This drop was caused primarily by a decrease in the number of both military and civilian personnel at Offutt Air Force Base. The public sector share of total employment decreased from 16.4 percent in 1988 to 13.3 percent in 1995.

Omaha Area (including Pottawattamie County, Iowa)

Table 4 summarizes changes in employment for the Omaha area including Pottawattamie County while Table 5 covers Pottawattamie County only. The most notable difference between Pottawattamie and the rest of the Omaha area is the relatively large increase (in Pottawattamie) in manufacturing and the decrease in FIRE. Manufacturing increased from 3,800 workers in 1988 to 4,900 in 1995, an increase of 29 percent. FIRE decreased from 2,200 to 2,100 workers, a decrease of 7 percent.

**Table 3
Omaha Area—Average Annual Employment, 1988-1995
(thousands)**

| Industry Sector | 1988 | % of Total | 1995 | % of Total | Absolute Change | % Change Employment | % Change Share |
|--|----------------|---------------|----------------|---------------|-----------------|---------------------|----------------|
| Private Sector | | | | | | | |
| Agricultural Services/Forestry/Fisheries | 2.003 | 0.56 | 2.871 | 0.69 | 0.87 | 43.33 | 23.00 |
| Mining | 0.428 | 0.12 | 0.331 | 0.08 | (0.10) | (22.66) | (33.63) |
| Construction | 15.883 | 4.44 | 20.909 | 5.02 | 5.03 | 31.64 | 12.97 |
| Manufacturing | 32.199 | 9.01 | 33.972 | 8.16 | 1.77 | 5.51 | (9.46) |
| Transportation/Communication/Utilities | 23.562 | 6.59 | 26.227 | 6.30 | 2.67 | 11.31 | (4.48) |
| Wholesale Trade | 24.224 | 6.78 | 26.052 | 6.25 | 1.83 | 7.55 | (7.71) |
| Retail Trade | 55.688 | 15.58 | 69.086 | 16.59 | 13.40 | 24.06 | 6.46 |
| Finance/Insurance/Real Estate | 38.813 | 10.86 | 42.190 | 10.13 | 3.38 | 8.70 | (6.72) |
| Services | 103.795 | 29.04 | 137.525 | 33.02 | 33.73 | 32.50 | 13.70 |
| Total Private Sector | 296.595 | 82.98 | 359.163 | 86.23 | 62.57 | 21.10 | 3.92 |
| Public Sector | | | | | | | |
| Federal, Civilian | 9.098 | 2.55 | 8.230 | 1.98 | (0.87) | (9.54) | (22.37) |
| Military | 16.574 | 4.64 | 11.619 | 2.79 | (4.96) | (29.90) | (39.84) |
| State and Local | 32.965 | 9.22 | 35.663 | 8.56 | 2.70 | 8.18 | (7.16) |
| Total Public Sector | 58.637 | 16.41 | 55.512 | 13.33 | (3.13) | (5.33) | (18.76) |
| Total Nonfarm Sector | 355.24 | 99.39 | 414.670 | 99.56 | 59.43 | 16.73 | 0.17 |
| Farm | 2.185 | 0.61 | 1.836 | 0.44 | (0.35) | (15.97) | (27.89) |
| Total Employment | 357.425 | 100.00 | 416.506 | 100.00 | 59.08 | 16.53 | 0.00 |

Note: The Omaha Area includes Douglas, Sarpy, and Washington Counties.
Source: Bureau of Economic Analysis, U.S. Department of Commerce

Table 4
Omaha Area (Plus Pottawattamie County, Iowa)—Average Annual Employment, 1988-1995
(thousands)

| <i>Industry Sector</i> | <i>1988</i> | <i>% of Total</i> | <i>1995</i> | <i>% of Total</i> | <i>Absolute Change</i> | <i>% Change Employment</i> | <i>% Change Share</i> |
|--|---------------|-------------------|---------------|-------------------|------------------------|----------------------------|-----------------------|
| Private Sector | | | | | | | |
| Agricultural Services/Forestry/Fisheries | 2.38 | 0.60 | 3.25 | 0.71 | 0.87 | 36.52 | 17.41 |
| Mining | 0.48 | 0.12 | 0.36 | 0.08 | (0.12) | (24.11) | (34.73) |
| Construction | 17.41 | 4.41 | 22.87 | 4.98 | 5.46 | 31.36 | 12.97 |
| Manufacturing | 36.02 | 9.12 | 38.90 | 8.47 | 2.88 | 8.00 | (7.12) |
| Transportation/Communication/Utilities | 26.04 | 6.60 | 28.40 | 6.19 | 2.37 | 9.09 | (6.18) |
| Wholesale Trade | 25.74 | 6.52 | 27.97 | 6.09 | 2.23 | 8.68 | (6.54) |
| Retail Trade | 63.77 | 16.15 | 78.22 | 17.04 | 14.46 | 22.67 | 5.50 |
| Finance/Insurance/Real Estate | 41.02 | 10.39 | 44.24 | 9.64 | 3.22 | 7.86 | (7.24) |
| Services | 113.62 | 28.78 | 150.03 | 32.68 | 36.41 | 32.05 | 13.56 |
| Total Private Sector | 326.47 | 82.70 | 394.25 | 85.89 | 67.78 | 20.76 | 3.86 |
| Public Sector | | | | | | | |
| Federal, Civilian | 9.39 | 2.38 | 8.49 | 1.85 | (0.90) | (9.53) | (22.20) |
| Military | 17.05 | 4.32 | 12.02 | 2.62 | (5.03) | (29.52) | (39.39) |
| State and Local | 37.44 | 9.49 | 40.39 | 8.80 | 2.95 | 7.87 | (7.23) |
| Total Public Sector | 63.89 | 16.18 | 60.90 | 13.27 | (2.98) | (4.67) | (18.01) |
| Total Nonfarm Sector | 390.49 | 98.92 | 455.36 | 99.20 | 64.86 | 16.61 | 0.29 |
| Farm | 4.28 | 1.08 | 3.67 | 0.80 | (0.61) | (14.22) | (26.23) |
| Total Employment | 394.77 | 100.00 | 459.02 | 100.00 | 64.25 | 16.28 | 0.00 |

Note: The Omaha Area includes Douglas, Sarpy, and Washington Counties in Nebraska, plus Pottawattamie County, Iowa.
 Source: Bureau of Economic Analysis, U.S. Department of Commerce

Summary of Employment Changes in the Economies

The private sectors dominated both the growth of the work force and the share of employment in all economies. The services sector was the major contributor to growth. To a lesser extent, retail trade augmented the expansion of the private sector. The top three private sector employers, from the national level down through the local level, were services, retail trade, and manufacturing.

In both absolute and relative terms, manufacturing employment decreased nationally while increasing in Nebraska (Table 6). Interestingly, although manufacturing employment increased in absolute terms in the Omaha area, it decreased in relative terms. The Pottawattamie County manufacturing sector increased in absolute and relative terms, indicating a small but healthy sector.

The Omaha Area, excluding Pottawattamie County, showed an increase of 1,773 workers in manufacturing for a healthy 5.5 percent gain, but also showed a -9.5 percent change in share. When Pottawattamie County is included, the Omaha Area gained 2,883 workers—a gain of 8.0 percent and a smaller drop in share of 7.1 percent. Pottawattamie

County, alone, as shown in Table 6, gained 1,110 workers for a 29.1 percent gain in absolute numbers and 13.5 percent change in share. Manufacturing in Pottawattamie County contributed significantly to the regional position of the sector.

Retail trade, while increasing in both absolute and relative terms in all levels, showed relatively small increases compared to other sectors. Changes in the rest of the private sector were heavily dependent on regional influences and seldom showed any consistencies from the national to local levels. Construction employment increased in absolute terms nationally, but decreased relative to overall employment. In Nebraska and the Omaha Area, construction increased in both absolute and relative terms.

The farm sector in all economies decreased in both absolute and relative terms. However, the farm sector is a significant portion of employment only in the Nebraska economy. Employment gains in the nonfarm private sector's agricultural services, forestry, and fisheries component either partially or fully offset the farm reductions, except in Pottawattamie County, where it remained constant.

Conclusion

The structural shift, at the national level, toward services from manufacturing, raises some concerns about the future health and potential growth of the national economy. Manufacturing typically provides full-time employment at higher wages with more fringe benefits, whereas services generally employs more part-time workers at lower wages with fewer benefits. As more citizens work for relatively lower wages and benefits, the greater the strain on the economy's overall quality of life. A portion of these lower wages must eventually supplement the lack of benefits (including health insurance) as well as fund daily living. Thus, there is less residual income available to advance the quality of life and bolster economic growth. The service sector will need to grow in terms of income and workers.

A second important impact of this structural change is that manufacturing is an export sector. The manufacturing industry ships products to other parts of the country and world, hence, manufacturing returns and circulates income from outside economies into the local venue. Therefore, the growth and health of the economy is accelerated by the influx of new resources. The service sector, with some exceptions, provides tertiary activity that recycles income generated locally. Thus, the dissipation of manufacturing effectively lessens the economy's ability to expand by placing greater dependence on local incomes as opposed to injections from outside or export sources.

One of the major factors in the national decrease in manufacturing employment is increased foreign competition. Starting with low-cost Japanese products in the 1960s and 1970s, there has been increasing import pressure from countries with low labor costs. The typical response of U.S. manufacturers to this increase in foreign competition has been to decrease manufacturing costs by exporting high labor cost manufacturing abroad. Downwardly inflexible labor costs in the U.S. make this a fiscal necessity for some companies.

There have been a number of adjustments to this decrease in national manufacturing employment in the U.S. labor market. Some of the most noticeable changes are:

- relatively lower per hour wages for fewer workers;
- greater use of low labor cost part-time employees;
- decreasing health care costs by using health maintenance organizations (HMOs); and
- employees accepting partial ownership of their companies in lieu of wage increases.

Manufacturing maintains certain levels of importance during times of national crises. A strong and flexible manufacturing sector is vitally important in terms of defense production and transportation vehicles. Moreover, a large portion of research and development expenditures resides in the manufacturing sector. Thus, the sector's reduced significance could be detrimental to advancing new technologies and products. This would have long-term implications for growth.

Table 5
Pottawattamie County, Iowa—Average Annual Employment, 1988-1995
(thousands)

| Industry Sector | 1988 | % of Total | 1995 | % of Total | Absolute Change | % Change Employment | % Change Share |
|--|--------------|---------------|--------------|---------------|-----------------|---------------------|----------------|
| Private Sector | | | | | | | |
| Agricultural Services/Forestry/Fisheries | 0.38 | 1.02 | 0.38 | 0.90 | 0.00 | 0.53 | (11.58) |
| Mining | 0.05 | 0.13 | 0.03 | 0.07 | (0.02) | (36.73) | (44.36) |
| Construction | 1.52 | 4.10 | 1.96 | 4.62 | 0.43 | 28.35 | 12.88 |
| Manufacturing | 3.82 | 10.27 | 4.93 | 11.65 | 1.11 | 29.00 | 13.46 |
| Transportation/Communication/Utilities | 2.48 | 6.65 | 2.18 | 5.15 | (0.30) | (12.04) | (22.64) |
| Wholesale Trade | 1.51 | 4.06 | 1.92 | 4.53 | 0.41 | 26.79 | 11.51 |
| Retail Trade | 8.08 | 21.71 | 9.14 | 21.59 | 1.06 | 13.08 | (0.54) |
| Finance/Insurance/Real Estate | 2.21 | 5.93 | 2.05 | 4.85 | (0.15) | (6.98) | (18.19) |
| Services | 9.83 | 26.41 | 12.51 | 29.56 | 2.68 | 27.27 | 11.94 |
| Total Private Sector | 29.87 | 80.27 | 35.08 | 82.93 | 5.21 | 17.46 | 3.30 |
| Public Sector | | | | | | | |
| Federal, Civilian | 0.29 | 0.78 | 0.26 | 0.62 | (0.03) | (9.28) | (20.21) |
| Military | 0.48 | 1.29 | 0.40 | 0.95 | (0.08) | (16.49) | (26.55) |
| State and Local | 4.48 | 12.04 | 4.73 | 11.17 | 0.25 | 5.54 | (7.18) |
| Total Public Sector | 5.25 | 14.11 | 5.39 | 12.74 | 0.14 | 2.71 | (9.67) |
| Total Nonfarm Sector | 35.12 | 94.38 | 40.48 | 95.67 | 5.36 | 15.25 | 1.37 |
| Farm | 2.09 | 5.62 | 1.83 | 4.33 | (0.26) | (12.39) | (22.94) |
| Total Employment | 37.21 | 100.00 | 42.31 | 100.00 | 5.10 | 13.70 | 0.00 |

Source: Bureau of Economic Analysis, U.S. Department of Commerce

Table 6
Comparative Employment Summary—Manufacturing Sector
Number of Workers

| | 1988 | % Share of Total | 1995 | % Share of Total | Absolute Change | % Change | % Change of Share |
|---|------------|------------------------|------------|------------------------|--------------------|-------------|-------------------------|
| U.S. | 19,886,000 | 14.77 | 19,225,900 | 12.88 | (660,100) | (3.30) | (12.83) |
| Nebraska | 98,490 | 10.34 | 115,220 | 10.65 | 16,720 | 16.98 | 2.99 |
| Omaha Area | 32,199 | 9.01 | 33,972 | 8.16 | 1,773 | 5.51 | (9.46) |
| Omaha Area plus Pottawattamie County | 36,020 | 9.12 | 38,900 | 8.47 | 2,883 | 8.00 | (7.12) |
| Pottawattamie County | 3,820 | 10.27 | 4,930 | 11.65 | 1,110 | 29.06 | 13.46 |

Nebraska Employment Growth 1990-1997

Employment data for Figure 1-3 (pgs.7 and 9) and Table 1 (pg. 8) for the period 1990-1997 are provided by the Nebraska Department of Labor and are available on **NU ONRAMP** via BBR's web site (www.bbr.unl.edu). View these data and much more on **NU ONRAMP**. (See pg. 16).

Figure 1
Nebraska Counties with Private Sector Employment Growth—1990-1997

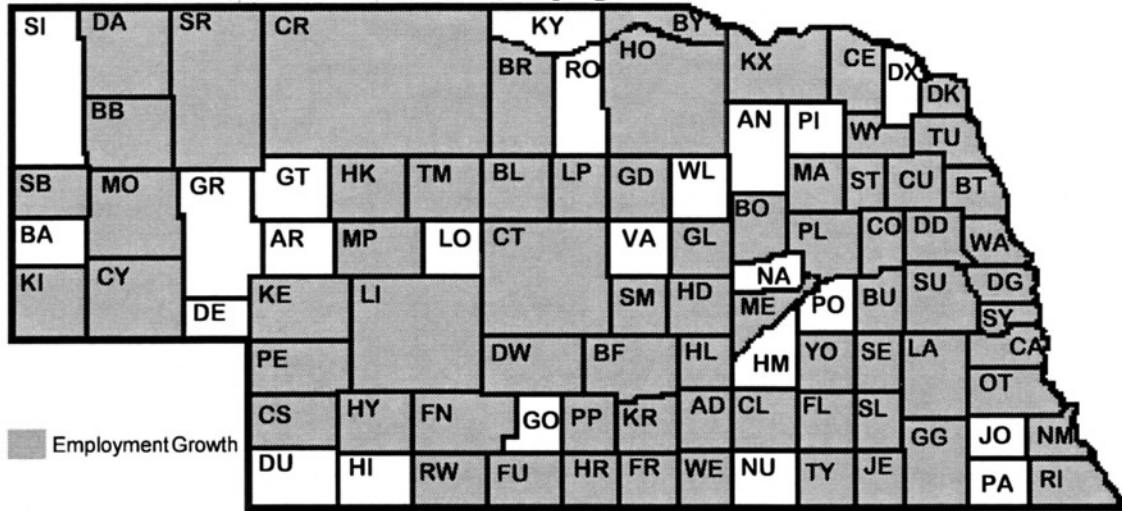


Figure 2
Nebraska Counties with Government Sector Employment Growth—1990-1997

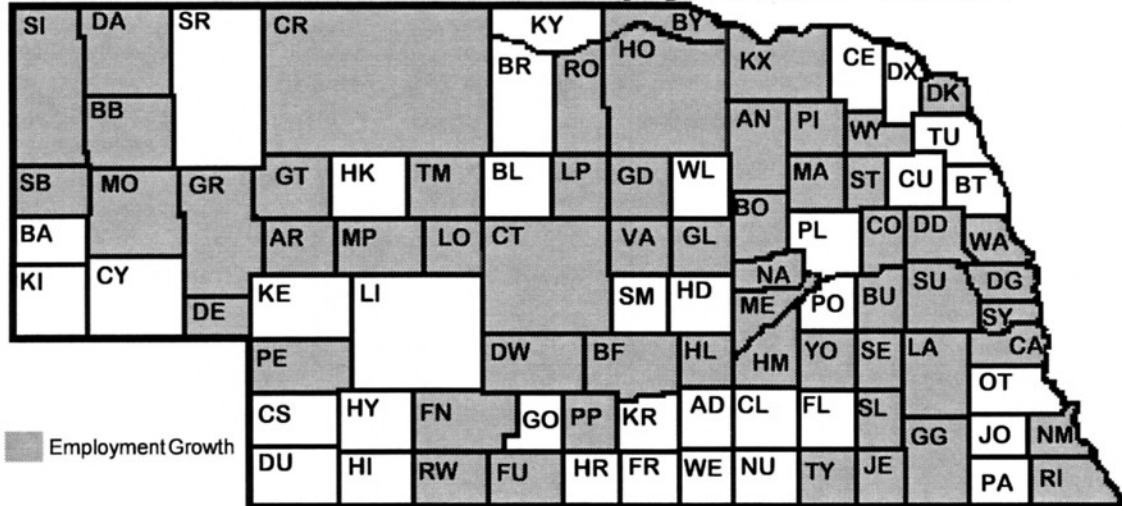


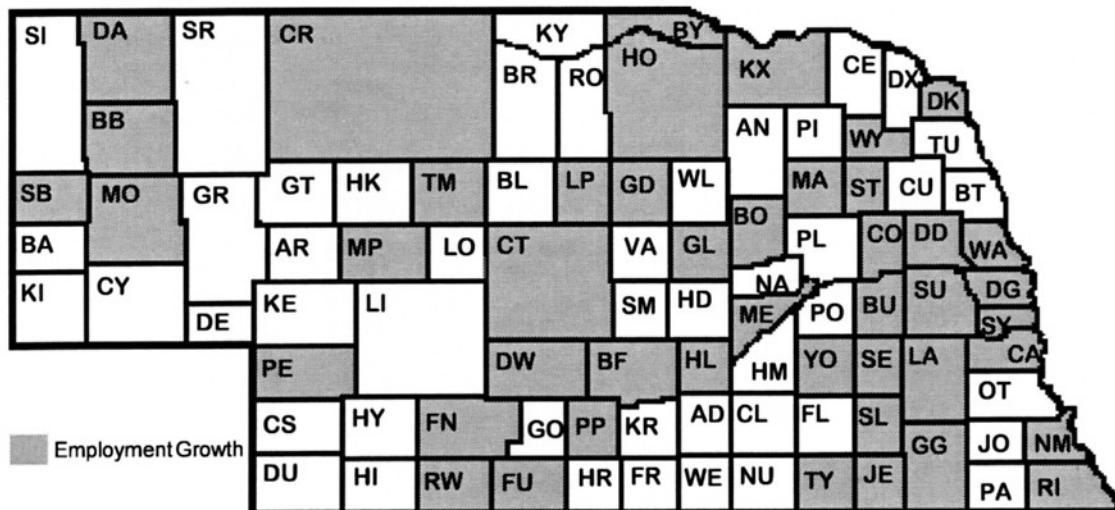
Table 1
Employment Changes in Private and Government Sector Employment by County—1990-1997

| | Private Sector ¹ | | | | Government Sector ² | | | | Private Sector ¹ | | | | Government Sector ² | | | | |
|-----------|-----------------------------|-----------------------------|---------------------|----------|--------------------------------|-----------------------------|---------------------|----------|-----------------------------|----------------|---------------------|----------|--------------------------------|----------------|---------------------|----------|-------|
| | 1990 Actual | 1997 ^p Actual | 1990-1997 Change | % Change | 1990 Actual | 1997 ^p Actual | 1990-1997 Change | % Change | 1990 Actual | 1997 Actual | 1990-1997 Change | % Change | 1990 Actual | 1997 Actual | 1990-1997 Change | % Change | |
| Adams | 11,367 | 12,972 | 1,605 | 14.1 | 2,770 | 2,640 | -130 | -4.7 | Jefferson | 2,323 | 2,520 | 197 | 8.5 | 641 | 655 | 14 | 2.2 |
| Antelope | 1,460 | 1,364 | -96 | -6.6 | 551 | 565 | 14 | 2.5 | Johnson | 1,016 | 991 | -25 | -2.5 | 456 | 450 | -6 | -1.3 |
| Arthur | 38 | 33 | -5 | -13.2 | 40 | 42 | 2 | 5.0 | Kearney | 1,278 | 1,398 | 120 | 9.4 | 550 | 546 | -4 | -0.7 |
| Banner | 30 | 23 | -7 | -23.3 | 83 | 72 | -11 | -13.3 | Keith | 2,576 | 2,700 | 124 | 4.8 | 627 | 612 | -15 | -2.4 |
| Blaine | 48 | 50 | 2 | 4.2 | 80 | 68 | -12 | -15.0 | Keya Paha | 46 | 33 | -13 | -28.3 | 68 | 61 | -7 | -10.3 |
| Boone | 1,183 | 1,213 | 30 | 2.5 | 573 | 587 | 14 | 2.4 | Kimball | 1,068 | 1,193 | 125 | 11.7 | 415 | 377 | -38 | -9.2 |
| Box Butte | 4,641 | 4,768 | 127 | 2.7 | 933 | 1,010 | 77 | 8.3 | Knox | 1,288 | 1,649 | 361 | 28.0 | 875 | 1,022 | 147 | 16.8 |
| Boyd | 304 | 357 | 53 | 17.4 | 295 | 316 | 21 | 7.1 | Lancaster | 89,128 | 109,520 | 20,392 | 22.9 | 32,570 | 35,787 | 3,217 | 9.9 |
| Brown | 609 | 695 | 86 | 14.1 | 395 | 389 | -6 | -1.5 | Lincoln | 9,982 | 12,258 | 2,276 | 22.8 | 2,651 | 2,610 | -41 | -1.5 |
| Buffalo | 13,712 | 17,187 | 3,475 | 25.3 | 3,270 | 3,912 | 642 | 19.6 | Logan | 78 | 44 | -34 | -43.6 | 87 | 91 | 4 | 4.6 |
| Burt | 1,138 | 1,202 | 64 | 5.6 | 647 | 623 | -24 | -3.7 | Loup | 22 | 60 | 38 | 172.7 | 62 | 67 | 5 | 8.1 |
| Butler | 1,280 | 1,559 | 279 | 21.8 | 575 | 582 | 7.0 | 1.2 | Madison | 13,778 | 17,801 | 4,023 | 29.2 | 2,951 | 3,449 | 498 | 16.9 |
| Cass | 2,424 | 3,080 | 656 | 27.1 | 919 | 1,085 | 166 | 18.1 | McPherson | 25 | 31 | 6 | 24.0 | 33 | 41 | 8 | 24.2 |
| Cedar | 1,533 | 1,896 | 363 | 23.7 | 788 | 720 | -68 | -8.6 | Merrick | 1,172 | 1,328 | 156 | 13.3 | 592 | 612 | 20 | 3.4 |
| Chase | 797 | 1,021 | 224 | 28.1 | 540 | 514 | -26 | -4.8 | Morrill | 726 | 769 | 43 | 5.9 | 456 | 482 | 26 | 5.7 |
| Cherry | 1,021 | 1,269 | 248 | 24.3 | 488 | 527 | 39 | 8.0 | Nance | 637 | 492 | -145 | -22.8 | 320 | 413 | 93 | 29.1 |
| Cheyenne | 3,431 | 3,835 | 404 | 11.8 | 835 | 801 | -34 | -4.1 | Nemaha | 1,605 | 1,883 | 278 | 17.3 | 1,275 | 1,429 | 154 | 12.1 |
| Clay | 1,265 | 1,681 | 416 | 32.9 | 866 | 836 | -30 | -3.5 | Nuckolls | 1,351 | 1,275 | -76 | -5.6 | 409 | 398 | -11 | -2.7 |
| Colfax | 2,984 | 3,521 | 537 | 18.0 | 562 | 611 | 49 | 8.7 | Otoe | 3,784 | 4,436 | 652 | 17.2 | 1,116 | 1,111 | -5 | -0.4 |
| Cuming | 2,530 | 2,946 | 416 | 16.4 | 683 | 682 | -1.0 | -0.1 | Pawnee | 366 | 325 | -41 | -11.2 | 279 | 278 | -1 | -0.4 |
| Custer | 2,432 | 2,447 | 15 | 0.6 | 973 | 1,012 | 39 | 4.0 | Perkins | 468 | 532 | 64 | 13.7 | 371 | 388 | 17 | 4.6 |
| Dakota | 10,678 | 10,892 | 214 | 2.0 | 802 | 858 | 56 | 7.0 | Phelps | 3,323 | 3,946 | 623 | 18.7 | 786 | 817 | 31 | 3.9 |
| Dawes | 1,834 | 2,276 | 442 | 24.1 | 1,279 | 1,403 | 124 | 9.7 | Pierce | 1,250 | 1,175 | -75 | -6.0 | 452 | 479 | 27 | 6.0 |
| Dawson | 5,991 | 8,958 | 2,967 | 49.5 | 1,585 | 1,851 | 266 | 16.8 | Platte | 11,975 | 15,341 | 3,366 | 28.1 | 2,588 | 2,578 | -10 | -0.4 |
| Deuel | 478 | 419 | -59 | -12.3 | 200 | 218 | 18 | 9.0 | Polk | 925 | 882 | -43 | -4.6 | 535 | 514 | -21 | -3.9 |
| Dixon | 1,299 | 1,238 | -61 | -4.7 | 577 | 461 | -116 | -20.1 | Red Willow | 3,701 | 4,183 | 482 | 13.0 | 985 | 1,033 | 48 | 4.9 |
| Dodge | 10,894 | 12,655 | 1,761 | 16.2 | 2,458 | 2,635 | 177 | 7.2 | Richardson | 2,099 | 2,203 | 104 | 5.0 | 652 | 869 | 217 | 33.3 |
| Douglas | 238,218 | 284,031 | 45,813 | 19.2 | 34,818 | 36,815 | 1,997 | 5.7 | Rock | 385 | 290 | -95 | -24.7 | 187 | 218 | 31 | 16.6 |
| Dundy | 429 | 383 | -46 | -10.7 | 246 | 241 | -5 | -2.0 | Saline | 4,074 | 4,979 | 905 | 22.2 | 1,090 | 1,133 | 43 | 3.9 |
| Fillmore | 1,446 | 1,642 | 196 | 13.6 | 793 | 792 | -1 | -0.1 | Sarpy | 14,841 | 22,743 | 7,902 | 53.2 | 5,856 | 6,128 | 272 | 4.6 |
| Franklin | 429 | 488 | 59 | 13.8 | 341 | 329 | -12 | -3.5 | Saunders | 2,432 | 3,000 | 568 | 23.4 | 1,118 | 1,298 | 180 | 16.1 |
| Frontier | 388 | 431 | 43 | 11.1 | 372 | 388 | 16 | 4.3 | Scotts Bluff | 11,892 | 12,670 | 778 | 6.5 | 2,646 | 2,888 | 242 | 9.1 |
| Furnas | 1,029 | 1,188 | 159 | 15.5 | 563 | 637 | 74 | 13.1 | Seward | 4,156 | 4,906 | 750 | 18.0 | 962 | 1,029 | 67 | 7.0 |
| Gage | 6,565 | 7,600 | 1,035 | 15.8 | 1,981 | 2,366 | 385 | 19.4 | Sheridan | 1,130 | 1,134 | 4 | 0.4 | 670 | 640 | -30 | -4.5 |
| Garden | 363 | 271 | -94 | -25.8 | 307 | 335 | 28 | 9.1 | Sherman | 415 | 430 | 15 | 3.6 | 355 | 319 | -36 | -10.1 |
| Garfield | 507 | 519 | 12 | 2.4 | 155 | 176 | 21 | 13.5 | Sioux | 91 | 83 | -8 | -8.8 | 99 | 113 | 14 | 14.1 |
| Gosper | 215 | 160 | -55 | -25.6 | 192 | 175 | -17 | -8.9 | Stanton | 816 | 941 | 125 | 15.3 | 306 | 335 | 29 | 9.5 |
| Grant | 81 | 77 | -4 | -4.9 | 91 | 98 | 7 | 7.7 | Thayer | 1,396 | 1,556 | 160 | 11.5 | 631 | 659 | 28 | 4.4 |
| Greeley | 388 | 437 | 49 | 12.6 | 297 | 300 | 3 | 1.0 | Thomas | 105 | 161 | 56 | 53.3 | 123 | 142 | 19 | 15.4 |
| Hall | 20,678 | 26,025 | 5,347 | 25.9 | 3,824 | 4,255 | 431 | 11.3 | Thurston | 1,414 | 1,738 | 324 | 22.9 | 639 | 638 | -1 | -0.2 |
| Hamilton | 2,137 | 2,019 | -118 | -5.5 | 573 | 587 | 14 | 2.4 | Valley | 1,015 | 989 | -26 | -2.6 | 589 | 643 | 54 | 9.2 |
| Harlan | 557 | 644 | 87 | 15.6 | 345 | 303 | -42 | -12.2 | Washington | 3,352 | 4,993 | 1,641 | 49.0 | 1,300 | 1,470 | 170 | 13.1 |
| Hayes | 73 | 87 | 14 | 19.2 | 103 | 95 | -8 | -7.8 | Wayne | 1,811 | 2,535 | 724 | 40.0 | 1,133 | 1,397 | 264 | 23.3 |
| Hitchcock | 320 | 280 | -40 | -12.5 | 397 | 365 | -32 | -8.1 | Webster | 573 | 687 | 114 | 19.9 | 363 | 327 | -36 | -9.9 |
| Holt | 2,369 | 2,772 | 403 | 17.0 | 774 | 873 | 99 | 12.8 | Wheeler | 76 | 35 | -41 | -53.9 | 108 | 73 | -35 | -32.4 |
| Hooker | 136 | 169 | 33 | 24.3 | 100 | 95 | -5 | -5.0 | York | 5,297 | 6,452 | 1,155 | 21.8 | 1,051 | 1,055 | 4 | 0.4 |
| Howard | 594 | 703 | 109 | 18.4 | 428 | 416 | -12 | -2.8 | | | | | | | | | |

^p Preliminary
¹ Includes nonfarm, private sector wage and salary employment. Farm workers, farm and nonfarm proprietors, self-employed individuals, and government workers are not included.
² Includes all government employees in Nebraska, including employees in public education, and government-based utilities.

Figure 3

Nebraska Counties with Private Sector and Government Sector Employment Growth — 1990-1997

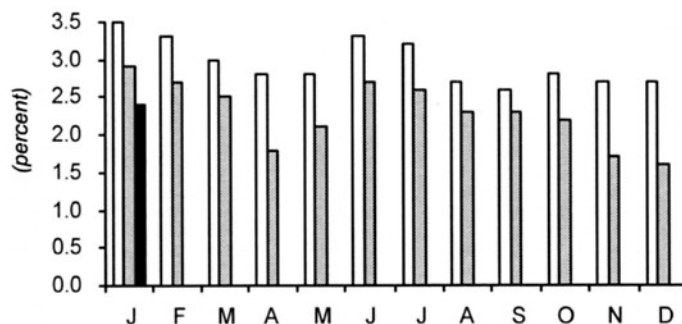
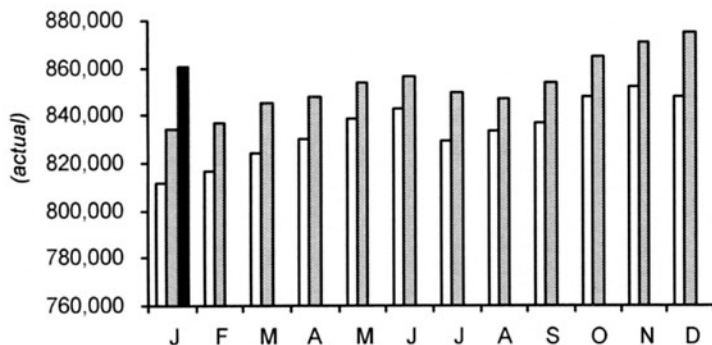


Nebraska Stats

□ 1996 ▒ 1997 ■ 1998

Total Nonfarm Employment

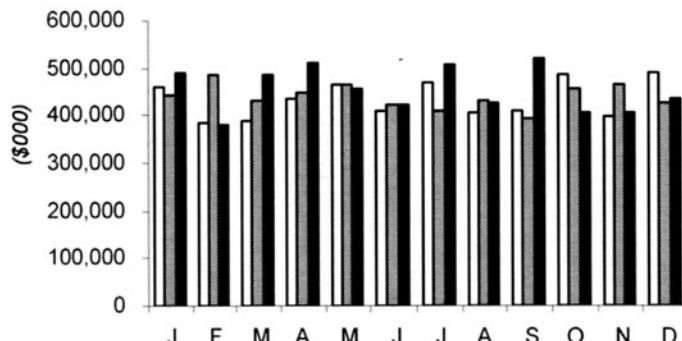
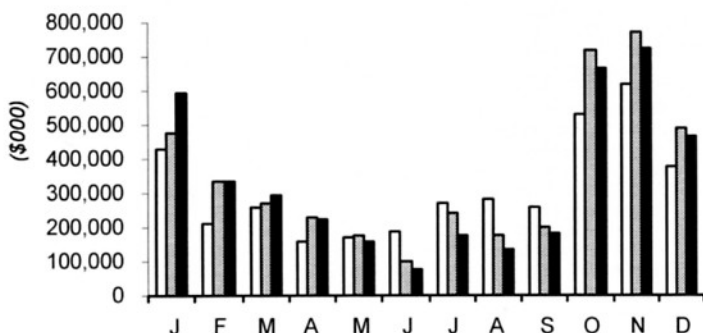
Unemployment Rate



Cash Receipts—Crops

Cash Receipts—Livestock

□ 1995 ▒ 1996 ■ 1997



Net Taxable Retail Sales* for Nebraska Cities (\$000)

| | December 1997 (\$000) | YTD (\$000) | YTD % Change vs Yr. Ago | | December 1997 (\$000) | YTD (\$000) | YTD % Change vs Yr. Ago |
|------------------------|--------------------------|----------------|-------------------------------|---------------------------|--------------------------|----------------|-------------------------------|
| Ainsworth, Brown | 2,345 | 21,947 | 8.2 | Kenesaw, Adams | 159 | 1,396 | 7.8 |
| Albion, Boone | 2,364 | 22,053 | -6.6 | Kimball, Kimball | 2,554 | 20,198 | 14.9 |
| Alliance, Box Butte | 8,077 | 74,317 | 4.6 | La Vista, Sarpy | 11,462 | 95,265 | 6.0 |
| Alma, Harlan | 850 | 8,166 | 1.4 | Laurel, Cedar | 437 | 4,587 | 0.9 |
| Arapahoe, Furnas | 802 | 8,682 | 11.9 | Lexington, Dawson | 8,471 | 84,127 | -3.8 |
| Arlington, Washington | 423 | 2,488 | 8.9 | Lincoln, Lancaster | 241,303 | 2,256,029 | 5.7 |
| Arnold, Custer | 388 | 3,215 | -0.3 | Louisville, Cass | 578 | 6,738 | 32.3 |
| Ashland, Saunders | 1,456 | 14,260 | 23.7 | Loup City, Sherman | 879 | 7,083 | 0.0 |
| Atkinson, Holt | 1,518 | 11,487 | 15.0 | Lyons, Burt | 640 | 5,990 | 8.1 |
| Auburn, Nemaha | 3,082 | 29,676 | 1.2 | Madison, Madison | 1,318 | 9,537 | 3.1 |
| Aurora, Hamilton | 3,435 | 31,829 | 1.4 | McCook, Red Willow | 13,874 | 131,509 | 3.5 |
| Axtell, Kearney | 141 | 972 | -10.3 | Milford, Seward | 1,127 | 10,885 | 9.5 |
| Bassett, Rock | 666 | 5,531 | 2.5 | Minatare, Scotts Bluff | 197 | 2,313 | -3.7 |
| Battle Creek, Madison | 853 | 7,847 | 5.7 | Minden, Kearney | 2,120 | 21,242 | 12.9 |
| Bayard, Morrill | 576 | 5,057 | 3.4 | Mitchell, Scotts Bluff | 1,465 | 10,496 | 21.4 |
| Beatrice, Gage | 14,612 | 129,184 | 9.5 | Morrill, Scotts Bluff | 591 | 5,378 | 14.1 |
| Beaver City, Furnas | 233 | 1,585 | 5.4 | Nebraska City, Otoe | 7,811 | 74,765 | 11.1 |
| Bellevue, Sarpy | 23,411 | 214,811 | 0.7 | Neligh, Antelope | 1,871 | 17,846 | 20.1 |
| Benkelman, Dundy | 745 | 6,556 | 4.0 | Newman Grove, Madison | 391 | 4,029 | 2.0 |
| Bennington, Douglas | 456 | 4,690 | 7.2 | Norfolk, Madison | 39,855 | 350,832 | 5.2 |
| Blair, Washington | 8,096 | 76,676 | 8.0 | North Bend, Dodge | 662 | 5,963 | 3.9 |
| Bloomfield, Knox | 981 | 8,091 | 7.0 | North Platte, Lincoln | 28,053 | 255,957 | 2.1 |
| Blue Hill, Webster | 584 | 5,512 | 7.3 | O'Neill, Holt | 5,525 | 51,238 | -1.1 |
| Bridgeport, Morrill | 1,117 | 12,955 | 12.6 | Oakland, Burt | 885 | 7,965 | 6.0 |
| Broken Bow, Custer | 4,743 | 46,404 | -7.5 | Ogallala, Keith | 6,025 | 64,751 | -0.3 |
| Burwell, Garfield | 1,059 | 9,242 | 7.8 | Omaha, Douglas | 596,812 | 5,354,105 | 5.2 |
| Cairo, Hall | 419 | 2,936 | 13.5 | Ord, Valley | 2,517 | 22,894 | 7.9 |
| Cambridge, Furnas | 1,205 | 9,791 | -28.1 | Osceola, Polk | 972 | 9,328 | 10.1 |
| Central City, Merrick | 2,155 | 20,533 | 5.0 | Oshkosh, Garden | 622 | 5,172 | -0.1 |
| Chadron, Dawes | 4,418 | 42,864 | 9.6 | Osmond, Pierce | 614 | 5,214 | -0.8 |
| Chappell, Deuel | 597 | 5,076 | 11.1 | Oxford, Furnas | 859 | 6,608 | 63.5 |
| Clarkson, Colfax | 505 | 5,417 | 0.6 | Papillion, Sarpy | 10,597 | 75,933 | 19.0 |
| Clay Center, Clay | 422 | 3,835 | 11.4 | Pawnee City, Pawnee | 434 | 3,723 | 5.9 |
| Columbus, Platte | 24,597 | 240,397 | 3.4 | Pender, Thurston | 895 | 9,036 | 9.7 |
| Cozad, Dawson | 3,592 | 36,223 | 12.2 | Pierce, Pierce | 1,043 | 8,361 | 9.5 |
| Crawford, Dawes | 657 | 6,571 | 10.9 | Plainview, Pierce | 1,019 | 8,519 | 11.7 |
| Creighton, Knox | 1,264 | 12,246 | 2.4 | Plattsmouth, Cass | 4,405 | 39,865 | 9.1 |
| Crete, Saline | 3,873 | 38,974 | -4.3 | Ponca, Dixon | 609 | 6,058 | 3.0 |
| Crofton, Knox | 510 | 4,846 | 1.0 | Ralston, Douglas | 3,274 | 37,753 | 10.0 |
| Curtis, Frontier | 394 | 3,905 | 9.3 | Randolph, Cedar | 606 | 4,792 | 5.7 |
| Dakota City, Dakota | 479 | 4,911 | -22.8 | Ravenna, Buffalo | 986 | 9,514 | 24.4 |
| David City, Butler | 1,663 | 16,552 | -5.5 | Red Cloud, Webster | 998 | 9,247 | 15.0 |
| Deshler, Thayer | 420 | 2,820 | -1.6 | Rushville, Sheridan | 901 | 6,618 | -0.3 |
| Dodge, Dodge | 474 | 3,099 | 5.2 | Sargent, Custer | 377 | 2,487 | -2.8 |
| Doniphan, Hall | 919 | 8,673 | 22.8 | Schuyler, Colfax | 2,820 | 23,347 | 2.5 |
| Eagle, Cass | 337 | 4,363 | 19.1 | Scottsbluff, Scotts Bluff | 29,286 | 255,988 | 7.1 |
| Elgin, Antelope | 765 | 5,360 | 3.6 | Scribner, Dodge | 746 | 6,248 | 6.7 |
| Elkhorn, Douglas | 2,506 | 25,482 | 16.8 | Seward, Seward | 5,884 | 58,924 | 3.8 |
| Elm Creek, Buffalo | 550 | 3,974 | 17.5 | Shelby, Polk | 377 | 3,986 | -0.9 |
| Elwood, Gosper | 385 | 4,919 | 5.8 | Shelton, Buffalo | 618 | 6,703 | -4.9 |
| Fairbury, Jefferson | 4,723 | 37,112 | 0.7 | Sidney, Cheyenne | 8,465 | 90,187 | 7.8 |
| Fairmont, Fillmore | 205 | 1,909 | 14.4 | South Sioux City, Dakota | 9,345 | 95,948 | 0.5 |
| Falls City, Richardson | 3,408 | 31,034 | 2.4 | Springfield, Sarpy | 439 | 3,807 | 13.8 |
| Franklin, Franklin | 831 | 5,816 | 3.2 | St. Paul, Howard | 1,528 | 15,285 | 10.0 |
| Fremont, Dodge | 25,231 | 241,531 | -1.2 | Stanton, Stanton | 810 | 7,158 | 5.9 |
| Friend, Saline | 669 | 5,510 | -4.1 | Stromsburg, Polk | 994 | 12,716 | 7.1 |
| Fullerton, Nance | 813 | 6,729 | 13.4 | Superior, Nuckolls | 2,209 | 19,567 | 4.2 |
| Geneva, Fillmore | 1,987 | 20,960 | 4.8 | Sutherland, Lincoln | 481 | 3,640 | 1.8 |
| Genoa, Nance | 352 | 2,950 | -7.0 | Sutton, Clay | 1,362 | 12,069 | -19.7 |
| Gering, Scotts Bluff | 4,167 | 39,856 | -1.1 | Syracuse, Otoe | 1,279 | 12,896 | 6.9 |
| Gibbon, Buffalo | 1,040 | 9,811 | 16.2 | Tecumseh, Johnson | 1,194 | 11,210 | -9.4 |
| Gordon, Sheridan | 2,486 | 22,036 | 7.7 | Tekamah, Burt | 1,417 | 13,346 | 5.2 |
| Gothenburg, Dawson | 2,791 | 26,634 | 9.2 | Tilden, Madison | 607 | 5,364 | 1.6 |
| Grand Island, Hall | 64,020 | 580,247 | 5.8 | Utica, Seward | 289 | 2,811 | -8.9 |
| Grant, Perkins | 1,110 | 11,836 | 10.2 | Valentine, Cherry | 5,050 | 46,991 | 5.1 |
| Gretna, Sarpy | 4,009 | 39,894 | -1.7 | Valley, Douglas | 1,135 | 14,357 | 8.4 |
| Hartington, Cedar | 2,346 | 20,032 | 7.8 | Wahoo, Saunders | 2,793 | 30,669 | 6.2 |
| Hastings, Adams | 25,987 | 241,906 | 2.4 | Wakefield, Dixon | 541 | 4,477 | 2.4 |
| Hay Springs, Sheridan | 508 | 4,089 | 6.0 | Wauneta, Chase | 499 | 3,780 | -3.3 |
| Hebron, Thayer | 2,398 | 23,356 | 21.9 | Waverly, Lancaster | 1,167 | 9,185 | 20.0 |
| Henderson, York | 1,027 | 7,560 | -5.7 | Wayne, Wayne | 4,140 | 37,826 | 2.9 |
| Hickman, Lancaster | 399 | 2,937 | 7.0 | Weeping Water, Cass | 678 | 7,706 | 8.7 |
| Holdrege, Phelps | 5,770 | 54,763 | -2.5 | West Point, Cuming | 4,790 | 46,615 | 4.2 |
| Hooper, Dodge | 495 | 4,243 | 9.6 | Wilber, Saline | 653 | 5,676 | 5.9 |
| Humboldt, Richardson | 648 | 6,104 | 4.5 | Wisner, Cuming | 996 | 8,196 | 22.7 |
| Humphrey, Platte | 932 | 8,973 | 2.4 | Wood River, Hall | 453 | 5,200 | 1.1 |
| Imperial, Chase | 2,431 | 23,065 | 15.9 | Wymore, Gage | 549 | 5,022 | 1.2 |
| Juniata, Adams | 323 | 2,674 | 3.5 | York, York | 11,902 | 111,350 | 9.9 |
| Kearney, Buffalo | 40,776 | 358,294 | 4.5 | | | | |

*Does not include motor vehicle sales. Motor vehicle net taxable retail sales are reported by county only.

Source: Nebraska Department of Revenue

Net Taxable Retail Sales for Nebraska Counties (\$000)

| | Motor Vehicle Sales | | | Other Sales | | | Motor Vehicle Sales | | | Other Sales | | |
|--------------|---------------------|-----------|-----------|-------------|------------|-----------|---------------------|---------|-----------|-------------|-----------|-----------|
| | December | | YTD | December | | YTD | December | | YTD | December | | YTD |
| | 1997 | YTD | % Chg. vs | 1997 | YTD | % Chg. vs | 1997 | YTD | % Chg. vs | 1997 | YTD | % Chg. vs |
| | (\$000) | (\$000) | Yr. Ago | (\$000) | (\$000) | Yr. Ago | (\$000) | (\$000) | Yr. Ago | (\$000) | (\$000) | Yr. Ago |
| Nebraska* | 172,596 | 2,205,118 | 6.7 | 1,772,451 | 15,568,994 | 5.5 | | | | 2,153 | 19,748 | 7.6 |
| Adams | 2,838 | 37,995 | 4.3 | 27,047 | 249,592 | 2.7 | | | | 5,845 | 48,175 | 1.8 |
| Antelope | 1,064 | 12,652 | 10.6 | 3,473 | 28,213 | 12.7 | | | | 2,051 | 15,583 | -7.5 |
| Arthur | 76 | 620 | 9.9 | 276 | (D) | (D) | | | | 2,636 | 24,176 | 9.9 |
| Banner | 129 | 1,690 | -5.5 | 39 | (D) | (D) | | | | 6,739 | 71,184 | 0.5 |
| Blaine | 65 | 1,073 | 38.1 | 234 | 1,111 | (D) | | | | 254 | 1,189 | 4.0 |
| Boone | 708 | 10,374 | 3.3 | 3,399 | 29,156 | -3.6 | | | | 2,675 | 20,792 | 15.2 |
| Box Butte | 1,450 | 17,542 | -3.7 | 8,445 | 77,855 | 4.7 | | | | 3,963 | 33,235 | 3.2 |
| Boyd | 259 | 2,853 | 19.8 | 1,137 | 7,378 | 0.5 | | | | 245,136 | 2,284,174 | 5.9 |
| Brown | 365 | 4,466 | 15.4 | 2,538 | 23,139 | 9.3 | | | | 29,421 | 266,896 | 1.9 |
| Buffalo | 4,051 | 54,275 | 8.6 | 44,549 | 392,829 | 5.2 | | | | 175 | (D) | (D) |
| Burt | 986 | 11,939 | 3.8 | 3,277 | 29,736 | 5.3 | | | | 61 | (D) | (D) |
| Butler | 1,095 | 11,251 | -1.0 | 2,777 | 22,876 | -2.9 | | | | 72 | (D) | (D) |
| Cass | 2,928 | 36,550 | 3.3 | 7,784 | 74,622 | 10.1 | | | | 43,140 | 378,993 | 5.2 |
| Cedar | 1,512 | 15,187 | 14.2 | 3,972 | 33,953 | 6.8 | | | | 2,901 | 27,424 | 3.6 |
| Chase | 609 | 7,802 | 24.7 | 2,995 | 27,380 | 12.7 | | | | 1,742 | 18,368 | 9.2 |
| Cherry | 969 | 9,598 | 34.4 | 5,497 | 49,545 | 4.7 | | | | 1,285 | 10,224 | 6.8 |
| Cheyenne | 1,098 | 13,729 | -4.0 | 9,058 | 93,755 | 7.4 | | | | 3,598 | 32,991 | 1.7 |
| Clay | 927 | 11,063 | 4.3 | 3,144 | 26,406 | -8.2 | | | | 3,012 | 26,492 | 4.4 |
| Colfax | 901 | 12,735 | 10.3 | 4,436 | 34,239 | 1.4 | | | | 9,631 | 92,740 | 10.2 |
| Cuming | 1,361 | 16,955 | 17.6 | 6,853 | 62,473 | 7.0 | | | | 954 | 6,480 | 0.7 |
| Custer | 1,192 | 16,503 | 19.0 | 6,631 | 58,363 | -5.4 | | | | 1,497 | 14,451 | 8.1 |
| Dakota | 1,570 | 23,543 | 2.5 | 11,023 | 110,972 | 0.7 | | | | 6,431 | 58,296 | -2.0 |
| Dawes | 733 | 8,941 | 8.2 | 5,119 | 49,495 | 9.7 | | | | 2,816 | 23,181 | 7.6 |
| Dawson | 2,255 | 32,405 | 13.6 | 15,407 | 152,343 | 2.3 | | | | 26,597 | 257,463 | 3.6 |
| Deuel | 190 | 3,198 | -3.2 | 1,142 | 10,565 | 15.3 | | | | 2,545 | 27,585 | 7.2 |
| Dixon | 615 | 8,472 | 14.3 | 1,523 | 12,268 | 3.5 | | | | 14,493 | 135,642 | 3.6 |
| Dodge | 3,342 | 46,009 | 4.4 | 28,178 | 265,036 | -0.5 | | | | 4,611 | 40,792 | 2.1 |
| Douglas | 45,500 | 555,114 | 5.1 | 606,224 | 5,460,693 | 5.3 | | | | 770 | 5,771 | 2.6 |
| Dundy | 436 | 4,054 | -6.5 | 807 | 6,931 | 2.8 | | | | 5,928 | 55,105 | -2.3 |
| Fillmore | 843 | 10,888 | 8.1 | 3,293 | 31,176 | 1.8 | | | | 51,178 | 438,904 | 5.3 |
| Franklin | 358 | 5,154 | 20.8 | 1,330 | 8,964 | 0.5 | | | | 7,602 | 71,396 | 8.0 |
| Frontier | 220 | 4,763 | 20.9 | 1,085 | 8,110 | 7.0 | | | | 35,904 | 315,116 | 6.4 |
| Furnas | 684 | 8,180 | 9.2 | 3,390 | 28,581 | -0.4 | | | | 7,915 | 76,066 | 4.5 |
| Gage | 2,382 | 28,675 | 7.8 | 16,525 | 143,579 | 9.0 | | | | 4,249 | 36,063 | 5.3 |
| Garden | 329 | 3,573 | 6.3 | 920 | 7,098 | -2.4 | | | | 1,239 | 9,084 | -3.5 |
| Garfield | 159 | 2,406 | 12.5 | 1,059 | 9,242 | 7.8 | | | | 193 | 1,835 | 4.0 |
| Gosper | 384 | 3,487 | 1.3 | 480 | 5,651 | 5.6 | | | | 1,080 | 9,195 | 4.8 |
| Grant | 109 | 1,538 | 47.2 | 331 | 2,409 | 18.9 | | | | 3,776 | 33,748 | 14.2 |
| Greeley | 266 | 3,573 | 4.2 | 1,206 | 8,444 | 6.5 | | | | 408 | 4,973 | 19.3 |
| Hall | 5,622 | 68,484 | 0.4 | 66,166 | 601,097 | 5.9 | | | | 1,181 | 10,881 | 9.4 |
| Hamilton | 1,198 | 14,580 | 5.0 | 4,289 | 37,252 | 0.5 | | | | 3,000 | 25,480 | 8.7 |
| Harlan | 462 | 5,206 | -9.9 | 1,152 | 10,598 | -1.1 | | | | 9,726 | 85,259 | 8.1 |
| Hayes | 104 | 1,672 | 7.4 | 135 | (D) | (D) | | | | 4,424 | 39,973 | 2.9 |
| Hitchcock | 464 | 4,407 | -4.7 | 972 | 7,670 | 2.6 | | | | 1,806 | 16,248 | 12.0 |
| Holt | 1,838 | 18,275 | 27.1 | 8,296 | 71,235 | 1.7 | | | | 240 | 1,477 | (D) |
| Hooker | 98 | 973 | -9.7 | 447 | 3,806 | -1.0 | | | | 13,785 | 125,187 | 8.6 |
| Howard | 689 | 9,656 | 18.4 | | | | | | | | | |
| Jefferson | 691 | 11,696 | 8.7 | | | | | | | | | |
| Johnson | 399 | 5,672 | 5.2 | | | | | | | | | |
| Kearney | 728 | 11,419 | 7.1 | | | | | | | | | |
| Keith | 957 | 12,624 | 10.3 | | | | | | | | | |
| Keya Paha | 134 | 1,514 | 28.6 | | | | | | | | | |
| Kimball | 411 | 6,110 | 5.6 | | | | | | | | | |
| Knox | 903 | 11,732 | 2.0 | | | | | | | | | |
| Lancaster | 21,246 | 272,883 | 8.7 | | | | | | | | | |
| Lincoln | 3,287 | 41,239 | 1.7 | | | | | | | | | |
| Logan | 159 | 1,216 | 3.3 | | | | | | | | | |
| Loup | 86 | 1,089 | 43.3 | | | | | | | | | |
| McPherson | 70 | 799 | 10.5 | | | | | | | | | |
| Madison | 3,498 | 45,858 | 9.7 | | | | | | | | | |
| Merrick | 851 | 10,862 | -4.2 | | | | | | | | | |
| Morrill | 725 | 8,167 | 18.6 | | | | | | | | | |
| Nance | 507 | 6,037 | 9.3 | | | | | | | | | |
| Nemaha | 771 | 10,091 | 11.1 | | | | | | | | | |
| Nuckolls | 541 | 7,385 | 13.5 | | | | | | | | | |
| Otoe | 1,344 | 21,149 | 7.0 | | | | | | | | | |
| Pawnee | 339 | 4,230 | 5.9 | | | | | | | | | |
| Perkins | 624 | 5,992 | 9.2 | | | | | | | | | |
| Phelps | 1,088 | 16,684 | -3.8 | | | | | | | | | |
| Pierce | 1,226 | 11,948 | 13.6 | | | | | | | | | |
| Platte | 3,146 | 44,817 | 7.9 | | | | | | | | | |
| Polk | 678 | 9,650 | 14.1 | | | | | | | | | |
| Red Willow | 1,091 | 15,051 | 8.0 | | | | | | | | | |
| Richardson | 994 | 11,763 | 6.9 | | | | | | | | | |
| Rock | 262 | 2,801 | 20.1 | | | | | | | | | |
| Saline | 1,406 | 16,543 | -1.3 | | | | | | | | | |
| Sarpy | 11,640 | 156,130 | 7.4 | | | | | | | | | |
| Saunders | 2,153 | 29,607 | 5.5 | | | | | | | | | |
| Scotts Bluff | 3,719 | 46,074 | 2.4 | | | | | | | | | |
| Seward | 1,780 | 21,982 | 12.6 | | | | | | | | | |
| Sheridan | 629 | 8,922 | 12.8 | | | | | | | | | |
| Sherman | 345 | 4,787 | 14.3 | | | | | | | | | |
| Sioux | 291 | 2,819 | 16.1 | | | | | | | | | |
| Stanton | 812 | 9,066 | 11.3 | | | | | | | | | |
| Thayer | 702 | 9,665 | 15.0 | | | | | | | | | |
| Thomas | 176 | 1,587 | 42.8 | | | | | | | | | |
| Thurston | 459 | 6,530 | 10.5 | | | | | | | | | |
| Valley | 407 | 6,135 | 14.3 | | | | | | | | | |
| Washington | 2,270 | 30,408 | 2.4 | | | | | | | | | |
| Wayne | 946 | 12,353 | 17.8 | | | | | | | | | |
| Webster | 368 | 5,473 | 6.0 | | | | | | | | | |
| Wheeler | 98 | 1,753 | 9.8 | | | | | | | | | |
| York | 1,579 | 21,916 | 13.6 | | | | | | | | | |

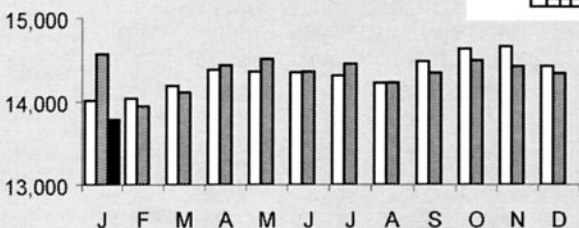
*Totals may not add due to rounding
(D) Denotes disclosure suppression

Source: Nebraska Department of Revenue

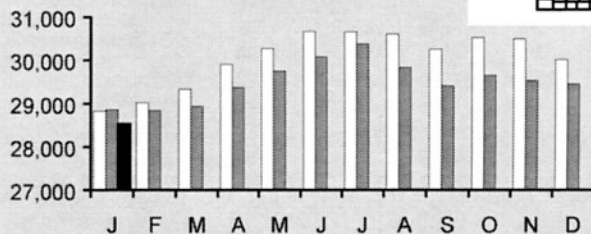
Regional Employment—1996 to January 1998

1996 1997 1998

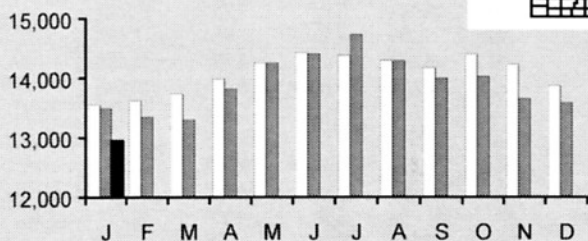
Northwest Panhandle



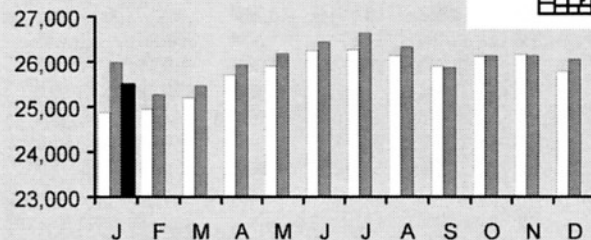
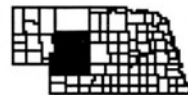
Southwest Panhandle



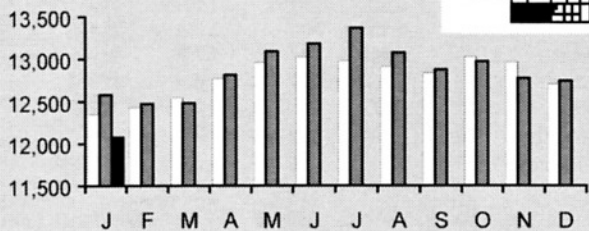
North Central



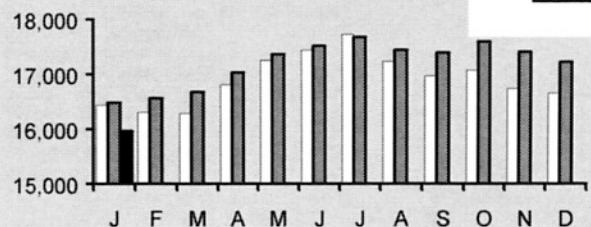
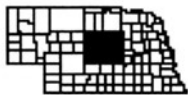
West Central



Southwest Central



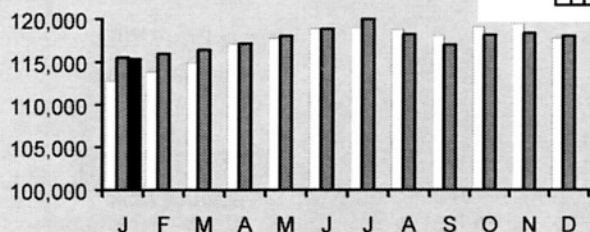
East Central



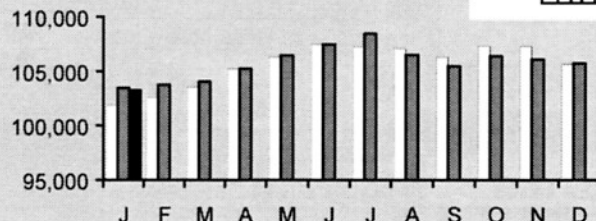
Regional Employment—1996 to January 1998

1996 1997 1998

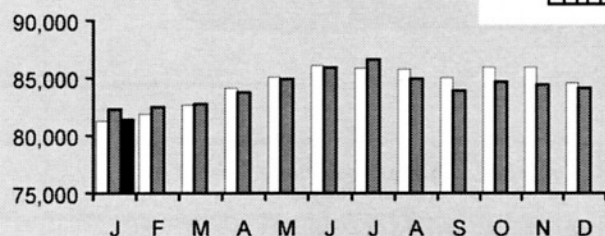
Southeast Central



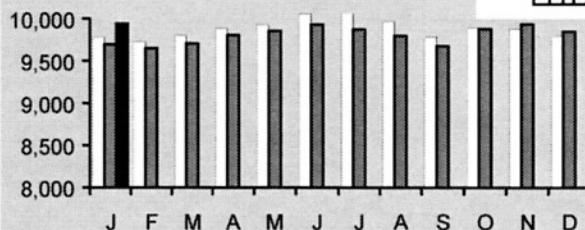
Northeast



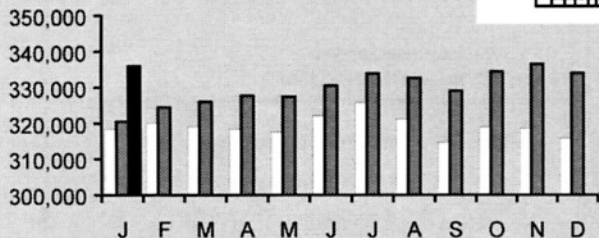
Southeast



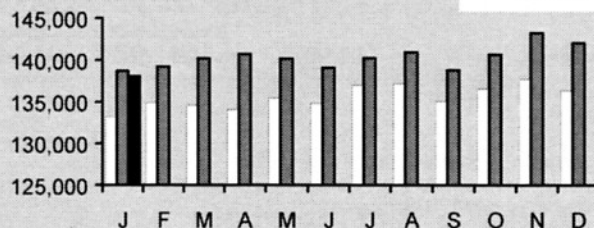
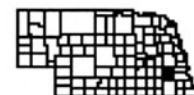
Sioux City MSA



Omaha MSA

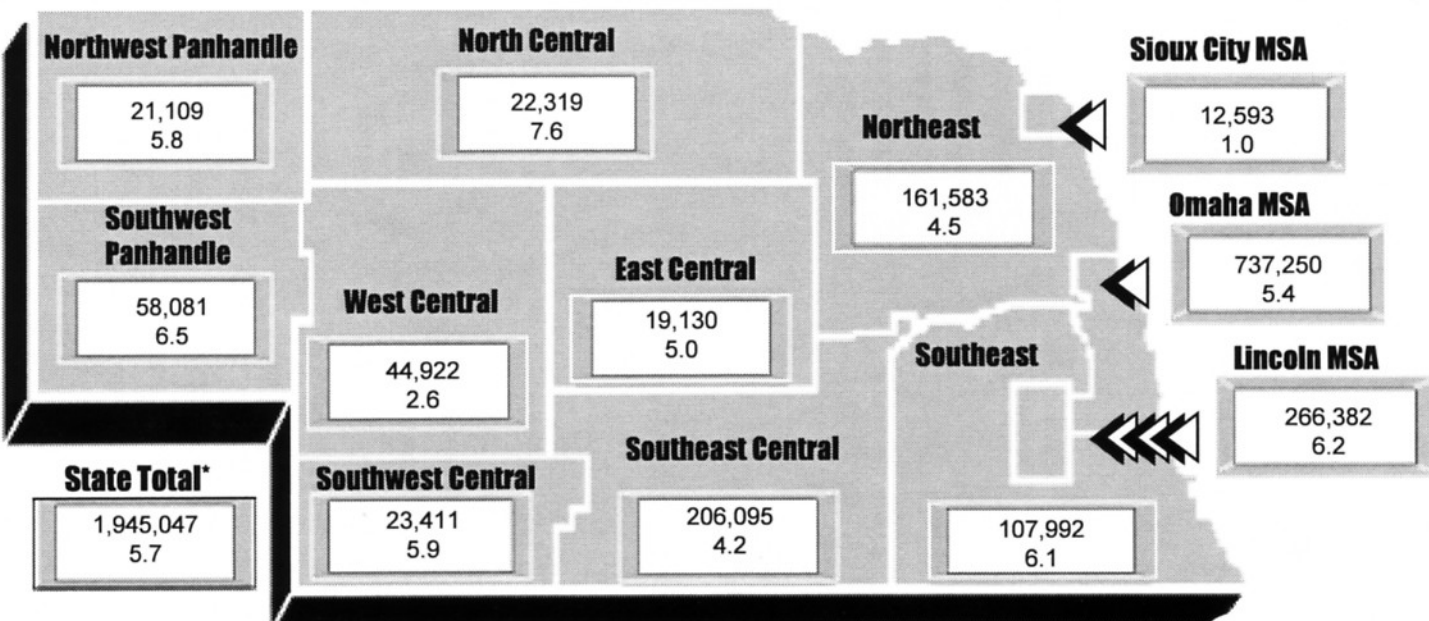


Lincoln MSA



December 1997 Regional Retail Sales (\$000)

Percent Change from Year Ago



*Regional values may not add to state total due to unallocated sales

Employment by Industry

| | Revised December 1997 | Preliminary January 1998 | % Change vs Yr. Ago |
|-----------------------|-----------------------------|--------------------------------|---------------------------|
| Nonfarm Emp (W&S) | 874,881 | 860,393 | 3.1 |
| Construction & Mining | 40,715 | 38,954 | 2.8 |
| Manufacturing | 117,645 | 117,537 | 3.4 |
| Druables | 57,561 | 57,316 | 5.0 |
| Nondurables | 60,084 | 60,221 | 1.9 |
| TCU* | 54,939 | 54,434 | 8.3 |
| Trade | 216,568 | 212,675 | 2.5 |
| Retail | 159,539 | 155,817 | 1.0 |
| Wholesale | 57,029 | 56,858 | 6.8 |
| FIRE** | 55,968 | 55,891 | 5.2 |
| Services | 232,967 | 229,713 | 4.3 |
| Government | 156,079 | 151,189 | -0.2 |
| Labor Force | 921,026 | 914,633 | 0.2 |
| Unemployment Rate | 1.6 | 2.4 | |

* Transportation, Communication, and Utilities

** Finance, Insurance, and Real Estate

Source: Nebraska Department of Labor

Price Indices

Consumer Price Index - U*
(1982-84 = 100)

| | February 1998 | % Change vs Yr. Ago | YTD % Change vs Yr. Ago |
|-------------|------------------|---------------------------|-------------------------------|
| All items | 161.9 | 1.4 | 1.5 |
| Commodities | 141.5 | -0.2 | -0.1 |
| Services | 182.4 | 2.6 | 2.7 |

*U = All urban consumers

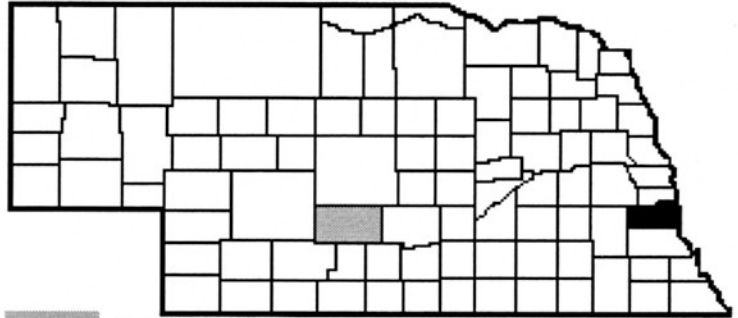
Source: U.S. Bureau of Labor Statistics

Inflation Rate

County of the Month

Cass

Plattsmouth-County Seat



License plate prefix number: 20

Size of county: 557 square miles, ranks 67th in the state

Population: 23,478 in 1996, a change of 10.1 percent from 1990

Per capita personal income: \$20,219 in 1995, ranks 15th in the state

Net taxable retail sales (\$000): \$111,963 in 1997, a change of 7.8 percent from 1996.

Number of covered business and service worksites¹: 439 in 1997

Unemployment rate: 2.9 percent in Cass County, 2.4 percent in Nebraska for 1995

| | State | Cass County |
|--|---------------------------|-------------|
| Covered nonfarm employment (1997) ¹ : | 798,618 | 3,970 |
| | <i>(percent of total)</i> | |
| Construction and Mining | 4.3 | 6.9 |
| Manufacturing | 14.4 | 8.7 |
| TCU | 5.1 | 6.1 |
| Wholesale Trade | 6.5 | 7.0 |
| Retail Trade | 19.1 | 21.3 |
| FIRE | 6.5 | 4.7 |
| Services | 26.1 | 17.6 |
| Government | 18.0 | 27.7 |

Agriculture:

Number of farms: 721 in 1992, 913 in 1987

Average farm size: 411 acres in 1992

Market value of farm products sold: \$64.1 million in 1992 (\$88,946 average per farm)

¹ Covered worksites and employment refer to business activity covered under the Nebraska Employment Security Law. Information presented has been extracted from the Employer's Quarterly Contribution Report, Nebraska Form UI-11. For further details about covered worksites and employment see the Nebraska Employers' Guide to Unemployment Insurance.

Sources: U.S. Bureau of the Census, U.S. Bureau of Economic Analysis, Nebraska Department of Labor, Nebraska Department of Revenue

bulletin board



To view the data from **NU ONRAMP** used for the employment growth table and maps on pages 7-9...

Go to
www.bbr.unl.edu
Click **NU ONRAMP**
Select Expert Search
Enter EMP-(*county name abbreviation*)

(For instance, to locate the information for Adams County, perform an expert search for EMP-AD)

Reminder: First-time users of **NU ONRAMP** must download the WinFrame client server software to gain access. The **NU ONRAMP** access page gives convenient, step-by-step instructions.

CPI Update

See March 1998
CPI table.

www.bbr.unl.edu
National Business Conditions
Consumer Price Index



Reminder!

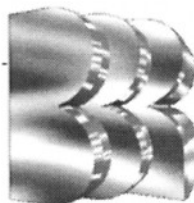
Visit BBR's home page for
access to **NUONRAMP**
and much more!

www.bbr.unl.edu

Copyright 1998 by Bureau of Business Research, University of Nebraska-Lincoln. ISSN 0007-683X. *Business in Nebraska* is published in ten issues per year by the Bureau of Business Research. Subscription orders and inquiries should be directed to Bureau of Business Research, 114 CBA, University of Nebraska-Lincoln 68588-0406. Annual subscription rate is \$10.

University of Nebraska-Lincoln—Dr. James C. Moeser, *Chancellor*
College of Business Administration—John W. Goebel, *Dean*

Bureau of Business Research (BBR)



...business is not our only business

Nonprofit Org.
U.S. Postage
PAID
Lincoln, Nebraska
Permit No. 46

specializes in ...

- economic impact assessment
- demographic and economic projections
- survey design
- compilation and analysis of data
- information systems design
- public access to information via **NU ONRAMP**

For more information on how BBR can assist you or your organization, contact us (402) 472-2334; send e-mail to: clamphear@cbamail.unl.edu; or use the World Wide Web: www.bbr.unl.edu