

Overview of the P & T Process

The information below is provided as a quick overview of the process toward tenure. The exact standards and procedures are provided in **College of Business Administration Guidelines for the Evaluation of Faculty: Annual Evaluations, Promotion and Tenure**. In the event that this document and the above documents disagree, the listed documents above will take precedent.

Time Table of Progression Toward Tenure

Year 1-5 – Teaching, Research & Service. Progress toward tenure should be addressed in the Annual Faculty Evaluation.

Year 6 – Apply for Tenure

Fall Semester

Beginning of October - File to Department

Beginning of November – File to P&T Committee

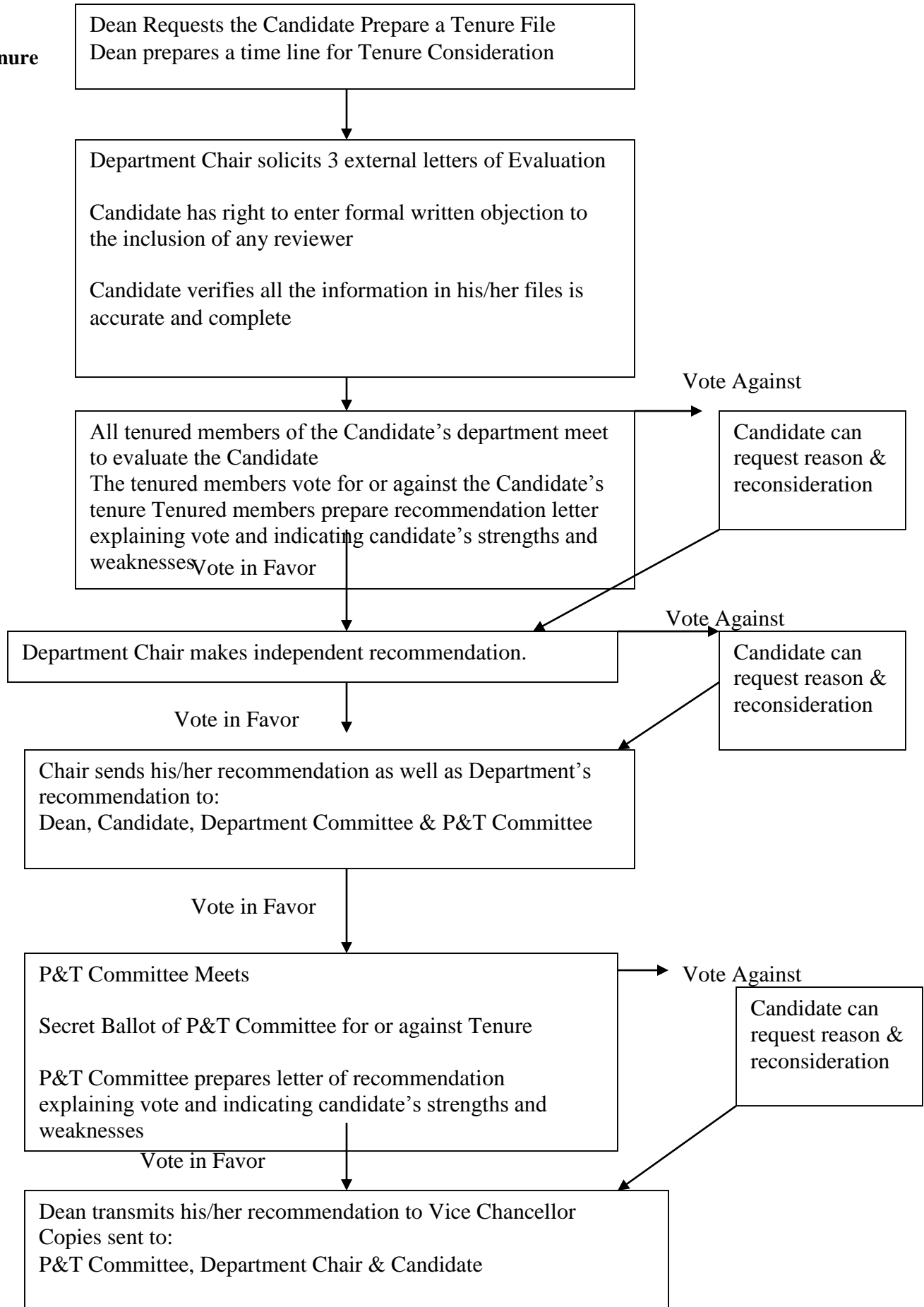
Spring Semester

Beginning of January - Vote of P&T Committee

February - File Due to Senior Vice Chancellor for
Academic Affairs Office

April - Notification

Tenure



Continued from previous page

