

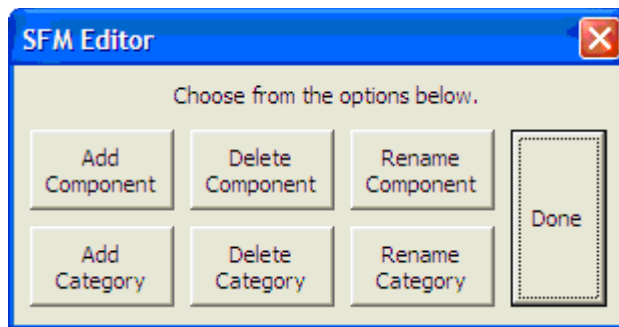
Using the Editor

Upon loading the macro, by choosing from the menu Tools>Macro>Macros (or Alt+F8), then selecting sfmedit and clicking “Run”, the User Interface appears, shown in Figure 1 below.

IMPORTANT! If you get an error message when trying to run the SFM Editor you may need to enable macros in Microsoft Excel. To enable macros click the Home Button in MS Excel and select ‘Excel Options’. Then select ‘Trust Center’ and click on ‘Trust Center Settings’. In the Trust Center Settings select ‘Macro Settings’. Select ‘Enable all macros’ to use the SFM Editor. If you have another version of Excel please consult the Help documentation for enabling macros.

Following is a list of the commands and the details on their use.

Figure 1. SFM Editor User Interface.



Add/Delete/Rename Component: adds, deletes, or renames (respectively) a single component (to both the receiving and delivering side). A query will ask for the number of the relevant component, corresponding to the number left of/below the component name. For the Add and Rename options, a separate query asks for the new name. After an addition or deletion, the components automatically renumber so that the components are identified by the lowest possible consecutive natural numbers. The successful completion of any of the preceding options or any invalid input will return the user to the main Editor menu.

Add/Delete/Rename Category: adds, deletes, or renames an entire category of components. A query will ask for the number corresponding to the place in order of the category. For the Add and Rename options, another query will ask for the name of the category. For addition, a third query will ask how many components the new category will contain. Next,

names are requested for the new components in order. After an addition or deletion, the components will automatically renumber. After any of these or any invalid input, the user will be returned to the main Editor menu.

The Done button is the final button on the Editor. Once all the desired changes are made, it will close the editor.