

## Connect to your Computer via Remote Desktop

Before you begin, insure that your internet connection is enabled and working.

First, Install the UNL VPN by going to “vpn.unl.edu”. When prompted, log in using your My.UNL (Blackboard) credentials.

Once you log in, Cisco AnyConnect Secure Mobility Client will ask to run the application that will begin installing the VPN to your computer. You will need to Press “Run” to allow the VPN to install.

This will install the Cisco AnyConnect Secure Mobility Client.

**Login**

For access to UNL Department resources, SAP, and SIS, select the **UNL-My.UNL** profile and enter your My.UNL username and password

For access utilizing two-factor authentication, select the **UNL-Secure** profile and enter your My.UNL username and your pin+tokencode

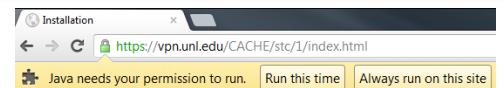
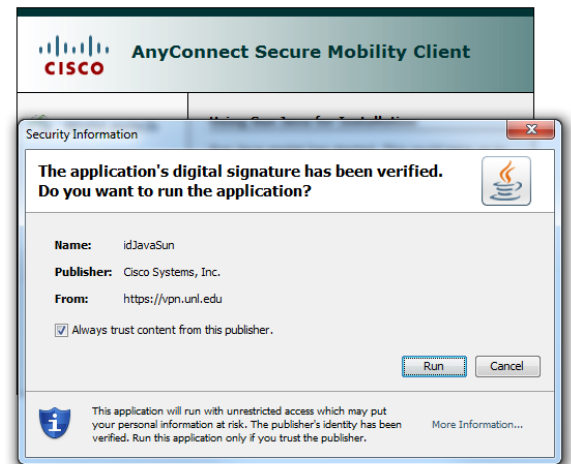
For third-party vendor access, select the **UNL-Vendor** profile and enter the provided credentials

GROUP: UNL-My.UNL

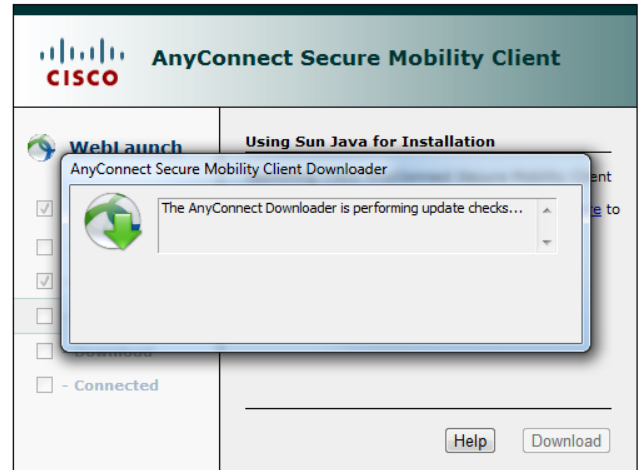
USERNAME:

PASSWORD:

Login



It will finish installing and then check for updates. After confirming that it is the most recent version it will go to the following screen.



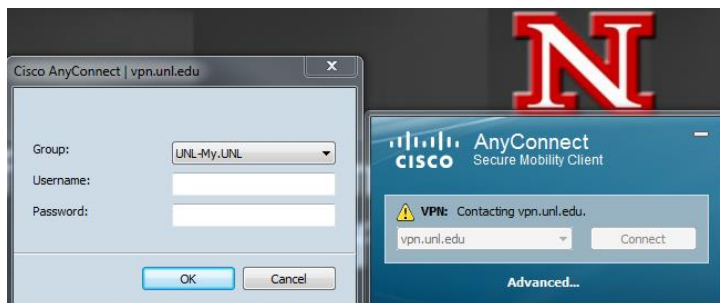
Cisco AnyConnect Secure Mobility Client will appear in the system tray. It will also be accessible through the Start Menu.



Clicking on it will allow you to connect to the VPN. It will then show the following screen.



Log in using the credentials you use to log in to your computer or Blackboard credentials.



Upon successful authentication, it will verify that you have successfully connected to the VPN.

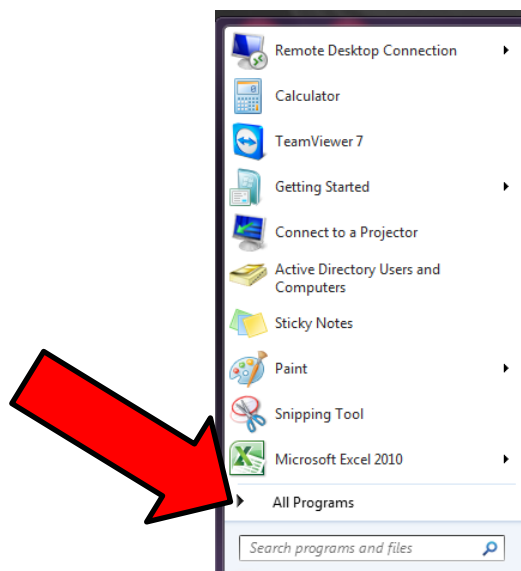


Select Your Start Button on your main desktop.

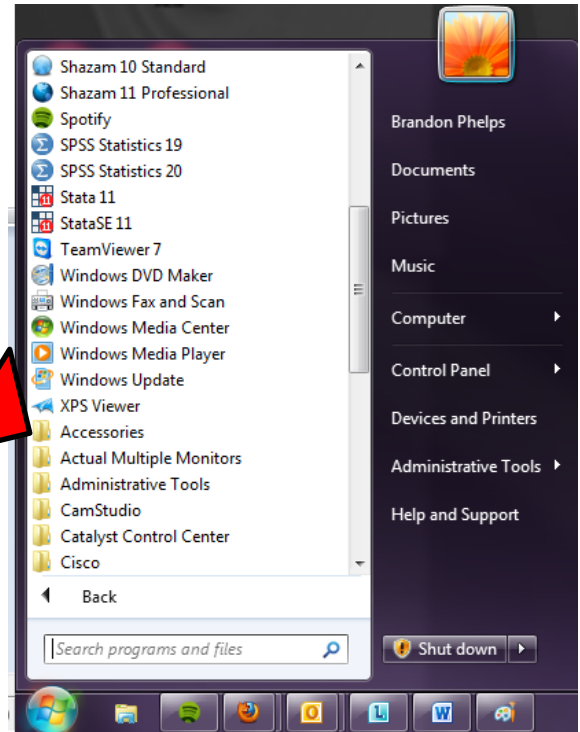
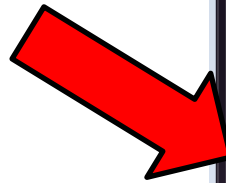


**Note:** You must be connected to the VPN before going through this.

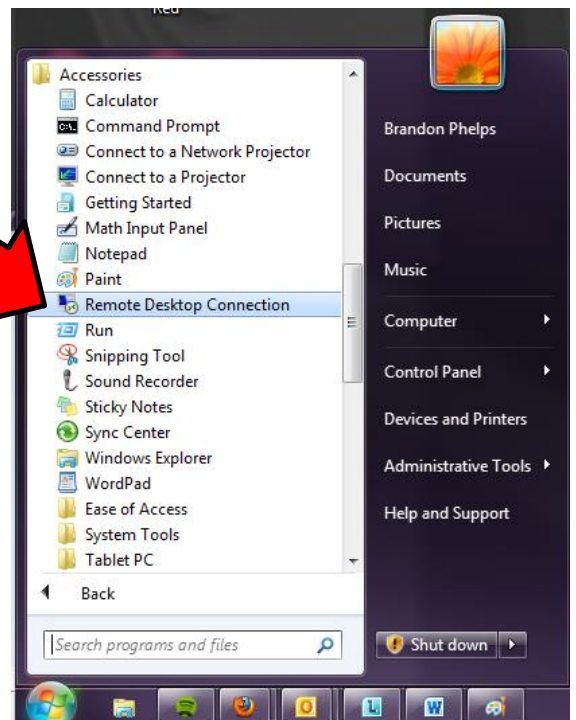
Select All Programs



Select the Accessories Folder



Select "Remote Desktop Connection"



When this window appears you will enter your office computer name.



Here you will enter your office computer logon credentials and should now have access to your office computer.

